

Winged (alatae) Aphids on Desert Lettuce

Dark abdominal dorsal markings

No abdominal dorsal markings

Abdominal Dorsal Patch

Dark patch on upper abdomen
Antennae Tubercule Convergent
Cornicles dark and swollen



Pear shaped with **red** eyes,
Abdomen green with white, waxy stripes
Legs and cornicles light



Abdominal Dorsal Stripes

Body elongate, large, no markings
Legs segments dark, tips of cornicles dark
Cauda and cornicles are long
Thorax light, abdomen green

Tips of cornicles dark, thorax light
Abdomen usually green in color



Cornicles and thorax dark
Abdomen brown - red in color

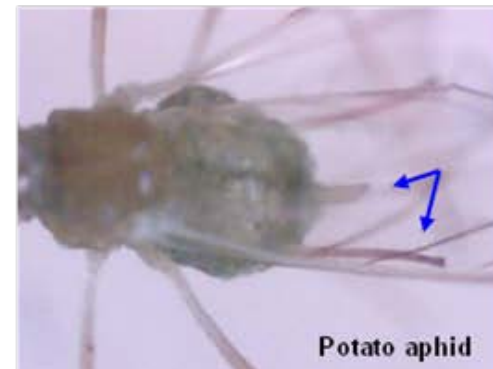
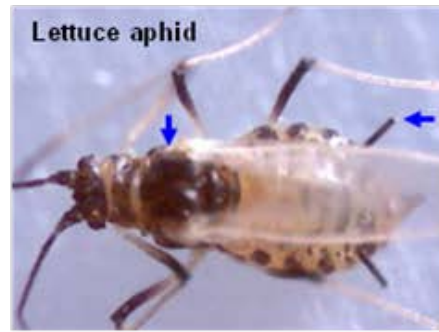


Plate 1. Pictorial Key for the Five major aphid species found in lettuce (alate forms)

Wingless (apterous) Aphids on Desert Lettuce

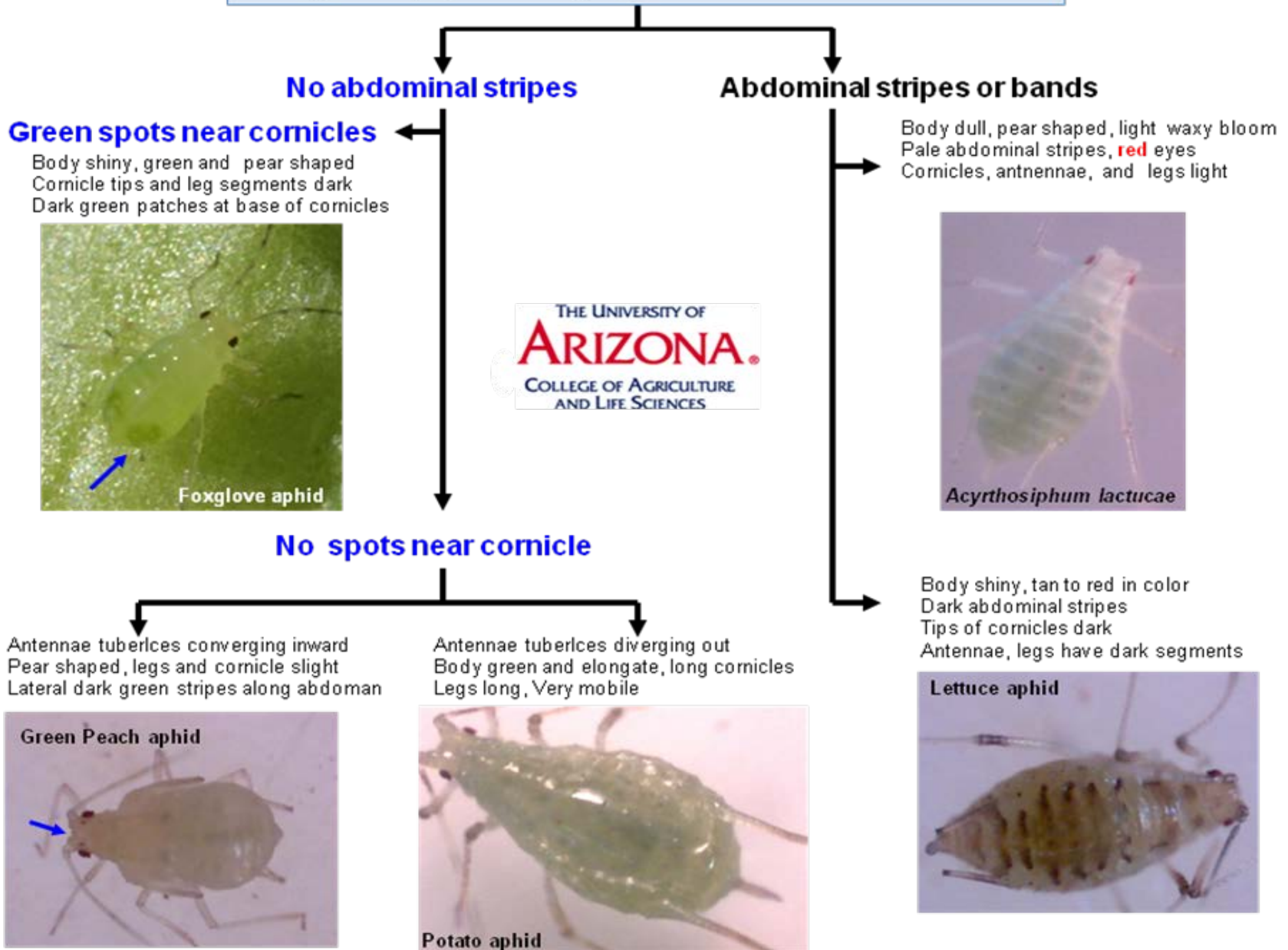


Plate 2. Pictorial Key for the Five major aphid species found in lettuce (apterous forms)



Lettuce Aphid
Nasonovia ribisnigri



Foxglove Aphid
Aulacorthum solani



Green peach Aphid
Myzus persicae



Lettuce Aphid
Nasonovia ribisnigri



Green peach Aphid
Myzus persicae



Potato Aphid
Macrosiphum euphorbiae



Acyrthosiphum lactucae



Plate 3. A) Green Peach Aphid (GPA) mature alate and immatures on lettuce, B) GPA apterous nymphs on lettuce on broccoli, C) GPA alate; note the converging antennal tubercles and dark patch on abdomen, D) GPA apterous form; note the converging antennal tubercles



Plate 4. A) Potato Aphid (PA) mature alate, B) Mature PA apterous nymph, C) PA Alate; note the light thorax and long cornicles, D) PA apterous form; note the long cornicles and cauda terous; note red eyes and light cornicles



Plate 5. A) Foxglove Aphid (FGA) mature alate, B) Mature FGA apterous nymph, C) FGA Alate; note the light thorax and dark tips on cornicles, D) FGA apterous form; note dark patches at base of cornicles



Plate 6. A) Lettuce Aphid (FGA) mature alate, B) Mature LA apterous nymph, B) LA Alate; note the dark thorax and cornicles, D) FGA apterous immature forms; note the red color of abdomen and thorax



Plate 7. A) GPA colonizing spinch leaf , B) FGA apterous form on celery stalk, C) FGA and GPA on celery leaf, D) Melon aphid apterous forms on celery leaf



Plate 8. A) Cabbage aphids apterous forms on seed pods of broccoli seed crop, B) Damage to broccoli seed crops by cabbage aphid, C) Turnip aphid apterous forms on cauliflower leaf, D) Turnip Aphid colonizing cauliflower plant