

Lettuce Aphid on Late Season Produce

John C. Palumbo, Department of Entomology

Lettuce Aphid *Nasonovia ribisnigri*

Description and Seasonal Development

Very little information on the Lettuce Aphids (LA) biology under desert conditions has been reported. However, LA appears to be most reproductively active when average temperatures are above 60 °F. They have a very short lifecycle (~8-10 days) and populations can build up rapidly. Under mild-winter temperatures, LA can be present on lettuce throughout the winter and spring crops. The nymphs are comparatively large and can take on different color forms, ranging from red to pink to brown. Adults, both apterous and alate are usually brown with a dark head and thorax. Extensive black markings can be found on adult, often including dark cornicles, dark bands across the abdomen, and dark bands on the legs. The antennae and cornicles are long in LA, and the legs are quit spindly giving it a spider-like appearance. A pictorial key for identification of LA is shown in Plates 1 and 2.

Economic Damage: LA are only found on lettuce crops (iceberg, romaine, butter, leaf), and unlike other aphid species in lettuce, the adults tend to deposit live nymphs near the growing point of plants. They continue to feed and reproduce deep within the plant on young newly developing leaves. In head lettuce and romaine, LA is found almost exclusively in developing heads and heart, often well protected under several layers of leaves. They economically damage lettuce as a contaminant, often rendering whole fields unmarketable.

Insecticidal Control




Fields not planted with imidacloprid or thiamethoxam are routinely treated with foliar insecticides upon detection of aphid colonization. Foliar sprays should be applied for aphid control based on a simple action threshold; when an average of 10% of plants has aphid colonies (4 or more immature apterous aphids) present. Plants should be sampled 5-7 days following sprays and retreated if the threshold is exceeded again.

Older products such as Orthene (acephate), endosulfan, Metasystox-R, dimethoate, malathion and pyrethroids can provide suppression of aphid populations on lettuce and cole crops with limited residual. Metasystox-R is particularly effective against lettuce aphids but has a restrictive REI and PHI. Repeated applications will probably be necessary, depending on time to harvest and aphid pressure. None of these products provides a quick, rapid knockdown of established aphid colonies and their reentry intervals and pre-harvest intervals vary, depending on rates and crops. After years of extensive use, many of these compounds only provide marginal efficacy against green peach aphid, and it is now common for PCAs to tank-mix the older products together or with a pyrethroid to achieve adequate economic control.

Several of the newer products overall offer good residual control of most aphid's species in leafy vegetables and cole crops, but most are weak against lettuce aphid including Beleaf, Fulfill, Assail and the other foliar neonicotinoids. Sivanto and Sequoia are translaminar insecticides that immediately suppresses the aphid activity and is non-toxic to beneficial insects. However, they are not capable of controlling heavy lettuce aphid infestations within heads, hearts and other protected leaf areas on leafy vegetable crops. Movento is the only aphicide that can consistently control lettuce aphids in lettuce. It is an excellent insecticide for aphid control that provides systemic activity against aphids as a foliar spray. Like the other new compounds, it is slow acting under cool, cloudy weather, and has shown excellent activity against lettuce and foxglove aphids, particularly in warm sunny weather.

Relative Efficacy Index For Aphids in Desert

Product	IRAC MOA	Green peach	Potato aphid	<i>A. lactuca</i> ¹	Foxglove aphid	Lettuce aphid ²	Cabbage aphid
Lannate	1A	Red	Yellow	Green	Red	Red	Red
Dimethoate	1B	Yellow	Green	Green	Yellow	Red	Yellow
MSR	1B	Yellow	Green	Green	Green	Green	Green
Orthene	1B	Yellow	Green	Green	Green	Yellow	Green
Malathion	1B	Red	Green	Green	Green	Red	Yellow
Bifenthrin	3	Red	Green	Green	Green	Red	Red
Imidacloprid	4A	Green	Green	Green	Yellow	Red	Green
Actara	4A	Green	Green	Green	Yellow	Red	Green
Assail	4A	Green	Green	Green	Yellow	Red	Green
Sequoia	4C	Green	Green	Green	Green	Yellow	Green
Sivanto	4D	Green	Green	Green	Green	Yellow	Green
Fulfill	9B	Yellow	Green	Green	Yellow	Red	Yellow
Beleaf	29	Green	Green	Green	Green	Red	Green
Movento	23	Green	Green	Green	Green	Green	Green

 Good residual control (7-14 d)
 Marginal residual control (4-6 d)
 Poor residual control (1-3 d)

¹ *Acyrtosiphon lactucae*; no common name

² *Nasonovia ribisnigri*; aka "red aphid"



A) Lettuce Aphid (FGA) mature alate, B) Mature LA apterous nymph, B) LA Alate; note the dark thorax and cornicles, D) FGA apterous immature forms; note the red color of abdomen and thorax





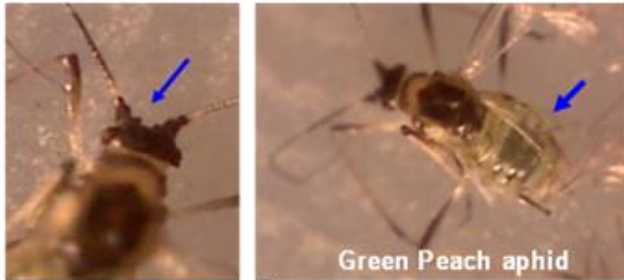
Winged (alatae) Aphids on Desert Lettuce

Dark abdominal dorsal markings

No abdominal dorsal markings

Abdominal Dorsal Patch

Dark patch on upper abdomen
Antennae Tubercle Convergent
Cornicles dark and swollen



Pear shaped with **red** eyes,
Abdomen green with white, waxy stripes
Legs and cornicles light



Abdominal Dorsal Stripes

Body elongate, large, no markings
Legs segments dark, tips of cornicles dark
Cauda and cornicles are long
Thorax light, abdomen green

Tips of cornicles dark, thorax light
Abdomen usually green in color



Cornicles and thorax dark
Abdomen brown - red in color

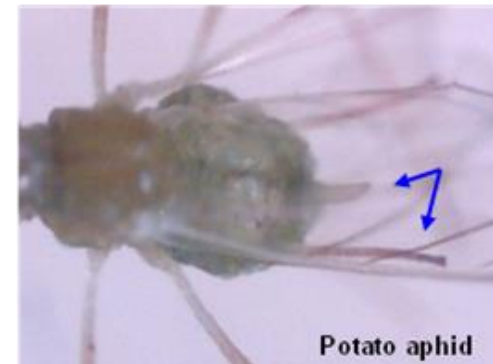


Plate 1. Pictorial Key for the Five major aphid species found in lettuce (alate forms)

Wingless (apterous) Aphids on Desert Lettuce

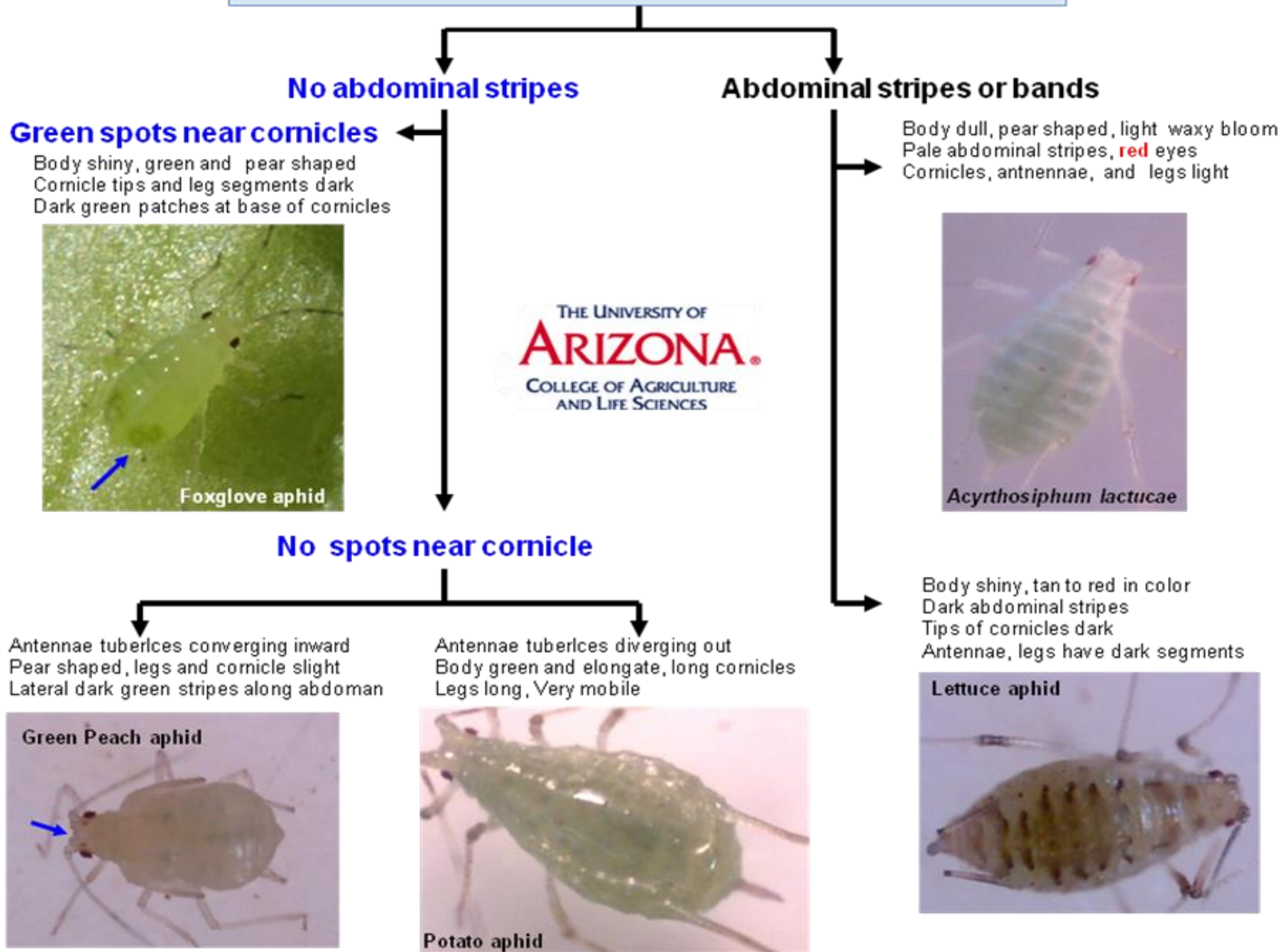


Plate 2. Pictorial Key for the Five major aphid species found in lettuce (apterous forms)