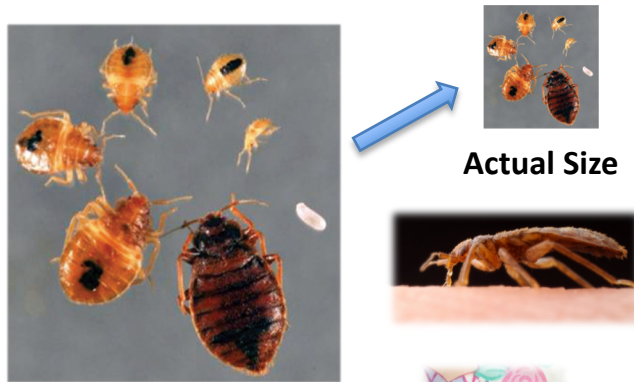


Bed Bugs!

Know the Enemy



Actual Size

Signs of Bed Bugs



Integrated Pest Management (IPM) is the most effective way to eliminate bed bugs.

Li, S., Gouge, D.H., Nair, S. 09/2020



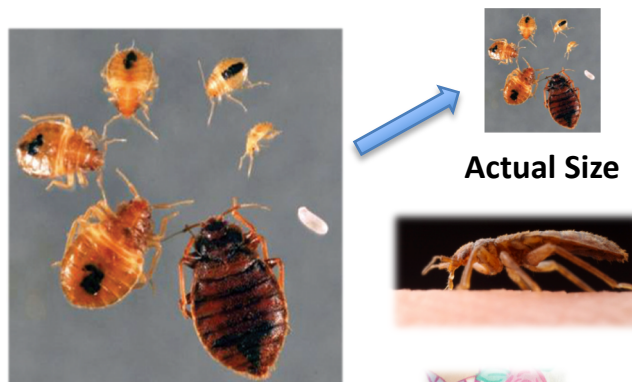
United States
Department of
Agriculture

National Institute
of Food and
Agriculture



Bed Bugs!

Know the Enemy



Actual Size

Signs of Bed Bugs



Integrated Pest Management (IPM) is the most effective way to eliminate bed bugs.

Li, S., Gouge, D.H., Nair, S. 09/2020



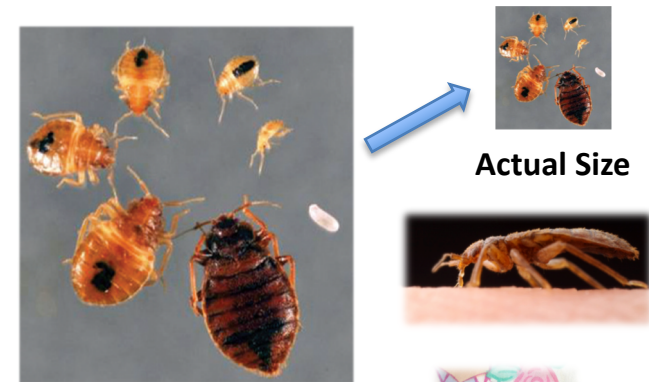
United States
Department of
Agriculture

National Institute
of Food and
Agriculture



Bed Bugs!

Know the Enemy



Actual Size

Signs of Bed Bugs



Integrated Pest Management (IPM) is the most effective way to eliminate bed bugs.

Li, S., Gouge, D.H., Nair, S. 09/2020



United States
Department of
Agriculture

National Institute
of Food and
Agriculture





Prevention - Carefully inspect items before bringing them home.

Non-Chemical Methods are becoming primary methods used in combination with pesticides.

Chemical Methods licensed pest management professionals have specialized products, equipment and expertise.

For information on bed bugs and IPM, please view

<http://www.epa.gov/bedbugs>

<https://acis.cals.arizona.edu/community-ipm/public-health-ipm>



COLLEGE OF AGRICULTURE
AND LIFE SCIENCES
COOPERATIVE EXTENSION
Arizona Pest Management Center



Contact Dr. Lucy Li, lucyli@email.arizona.edu



Prevention - Carefully inspect items before bringing them home.

Non-Chemical Methods are becoming primary methods used in combination with pesticides.

Chemical Methods licensed pest management professionals have specialized products, equipment and expertise.

For information on bed bugs and IPM, please view

<http://www.epa.gov/bedbugs>

<https://acis.cals.arizona.edu/community-ipm/public-health-ipm>



COLLEGE OF AGRICULTURE
AND LIFE SCIENCES
COOPERATIVE EXTENSION
Arizona Pest Management Center



Contact Dr. Lucy Li, lucyli@email.arizona.edu



Prevention - Carefully inspect items before bringing them home.

Non-Chemical Methods are becoming primary methods used in combination with pesticides.

Chemical Methods licensed pest management professionals have specialized products, equipment and expertise.

For information on bed bugs and IPM, please view

<http://www.epa.gov/bedbugs>

<https://acis.cals.arizona.edu/community-ipm/public-health-ipm>



COLLEGE OF AGRICULTURE
AND LIFE SCIENCES
COOPERATIVE EXTENSION
Arizona Pest Management Center



Contact Dr. Lucy Li, lucyli@email.arizona.edu